

Specialized Programs and Mobile

Specialized Programs perform practical calculations and will be extended for current themes.

MeMaS Lite

researches and calculates selected NIBIS® data (e. g. field capacities or effective root penetration depths of the soil).

Interpretation of a 3D-Model

enables the creation of virtual geological sections and boreholes through the free choice of a intersection line or of a drilling location.

Soil water balance (BOWAB)

This thematic program allows the calculation of parameters for controlling irrigation at the beginning and end of the infiltration period as well as the amount of infiltration water in relation to site and cultivation.

NIBIS® MAP SERVER Touch

The NIBIS® MAP SERVER is also available for mobile use. The layout and basic functions of the map server have been optimized for smartphones and tablets.

Contact



- Stadtbahnlinie / Tram line U3 U7
 - Buslinie / Bus line 127 133
 - Stadtbahn- und Bushaltestelle / Tram and Bus stop
 - Stadtbahn- und Bushaltestelle / Tram and Bus stop PAPPELWIESE
- Ab Hauptbahnhof Stadtbahnlinie 7 Richtung Schierholzstraße bis Haltestelle Pappelwiese
From main railway station take tram No. 7 direction Schierholzstraße to station Pappelwiese



State Authority for Mining,
Energy and Geology (LBEG)
Contact: Anja Steininger

Stilleweg 2, 30655 Hannover, Germany
Telefon: +49 (0) 511-643-3590
Telefax: +49 (0) 511-643-53 3590

Anja.Steininger@lbeg.niedersachsen.de
www.nibis.lbeg.de/cardomap3/?lang=en
www.lbeg.niedersachsen.de

06/2018 | ff.mediengestaltung GmbH



Landesamt für
Bergbau, Energie
und Geologie

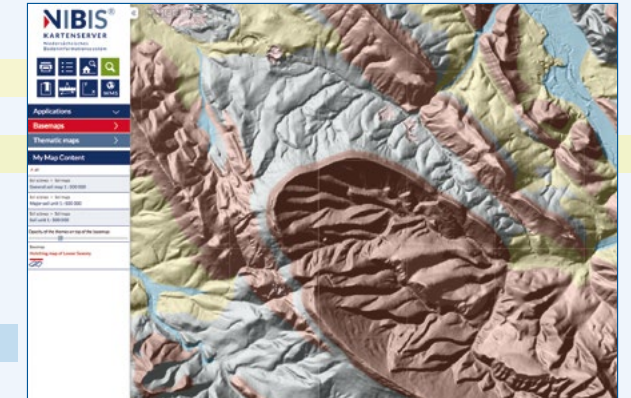
NIBIS® MAP SERVER

www.nibis.lbeg.de/cardomap3/?lang=en

The NIBIS® MAP SERVER is the public portal for geo-spatial data in Lower Saxony and offers more than 400 thematic maps covering contaminated sites, mining, soil science, erosion, geology, geothermal energy, geophysics, hydrogeology, engineering geology, climate change and raw materials.

The NIBIS® MAP SERVER

www.nibis.lbeg.de/cardomap3/?lang=en



Each single layer is presented with a legend, an explanation and the processing status. With one click into the map, for many layers information with pinpoint accuracy will be provided in the form of tables, photos, profile columns or diagrams.

All layers are also published as Web Map Services. So NIBIS® maps can be integrated into other (GIS-) systems: The addresses can be found in the explanations about the themes or on the LBEG homepage.



Niedersachsen

Operating Concept

Thematic maps and individual objects can be easily accessed via terms such as "soil", "geology", "groundwater" ... from the hit list and can be displayed in the map. The search is optimized for german terms. Alternatively, maps can be selected from the table of contents. This is done via the navigation point "Thematic maps".



All **tools**, **functions**, **applications** and **basemaps** offered can be accessed via the left navigation bar and will always open in a separate dialog panel.

Tools and Functions



- Print** the current map view in various paper sizes and scales in PDF-format.
- Display** the legends of all activated thematic maps.
- Find** villages, streets and house numbers using selection lists.
- Search** for locations/addresses, themes and single objects.
- Save** of the current map image for later reuse – QR-codes are supported.
- Measure** of distances or areas in the map image. Additionally, an elevation profile can be generated.
- Determine** or display coordinates from different coordinate systems in the map image.
- Add** other WMS-services or WFS-services.

Base Maps and Thematic Maps

These base maps are available for selection:

- ▶ Topography of Lower Saxony and Schleswig-Holstein (grey-transparent)
- ▶ WebAtlas Germany (grey-semitransparent)
- ▶ OpenStreetMap (coloured)
- ▶ Aerial images of Lower Saxony
- ▶ Shading map (relief map) of Lower Saxony

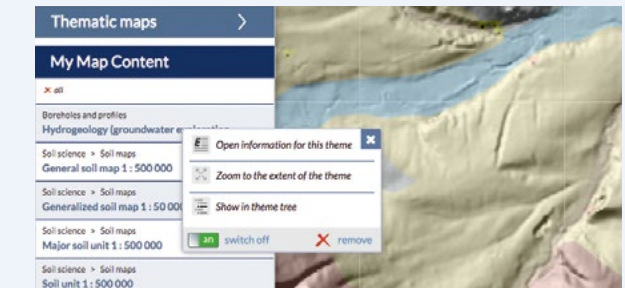
The **base map** can be opened with a click on above or under the thematic map. Using a slider can adjust the opacity of the top map.

Thematic maps: The table of contents provides the complete list of all publicly available **NIBIS®** themes. For many maps, the **legend** units can be selected individually for a view (**To filter a theme**).

The themes which were selected from **Basemaps**, **Thematic Maps** or by **Search**, appear under the tab **My Map Content**. These themes can be saved as a **link of the map** and may be reused for a later visit to the **NIBIS® MAP SERVER** in the same combination by a click on the link.

My Map Selection

Click on a map title to open a context-menu:



Open information for this theme will open a new window that displays the WMS-address or WFS- address of the theme, an explanation, date and processing status. Further information can be obtained from the **NIBIS®** Infothek.

Zoom to the extent of the theme adjusts the map section to the extent of the map.

Show in the theme tree opens the theme tree and displays the selected theme highlighted in yellow.

The button **on** starts the theme view in the map window, the button **off** stops it.

With a click on **remove**, the theme will be removed from the map selection.